



NestBorn

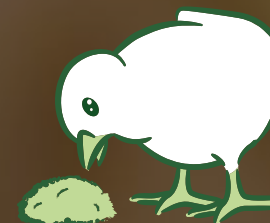
- ✓ Optimal chick welfare
- ✓ Accessible early feeding
- ✓ Full control
- ✓ Easy implementation

Natural → On-Farm **HATCHING**

NestBorn® is a revolutionary on-farm hatching concept focusing on chick welfare and sustainability. Without specific installations or investments, pre-incubated eggs are placed and hatched on a natural litter bed in the poultry house. A unique “real-time” monitoring platform is developed for the farmer and the hatchery to monitor the optimal poultry house climate that will lead to an optimal hatchability.

The NestBorn® approach results in robust chicks which are born in a natural and stress-free environment.

The chicks have direct access to feed (“early feeding”) and water.



NestBorn PROCESS



1 PREPARATION
LITTER BED



2 TRANSPORT



3 PLACING



4 HATCHING
MONITORING



5 HATCHING



6 ACCESS TO
FEED & WATER



on-farm **HATCHING**

- ✓ No day-old chick transport
- ✓ Natural hatching process
- ✓ Day-old chicks, every day of the week 24/7

early **FEEDING**

- ✓ Direct access to feed & water
- ✓ Great immunity development
- ✓ Better intestinal health

- ✓ Less disease pressure
- ✓ Less use of antibiotics
- ✓ Less mortality
- ✓ Less stress
- ✓ More robust

The best of **BOTH WORLDS**

NestBorn® combines the benefits of on-farm hatching with the concept of early feeding. No stress from handling, no stress from transport and the chicks hatch in proximity of feed and water.

Achieving higher levels of chick and broiler welfare and a sustainable reduction of use of antibiotics, is becoming more and more important throughout the world. An early access to feed ("early feeding"), water, space and light for day-old chicks is becoming increasingly important for the society and for consumers and the concept of on-farm hatching responds perfectly to these different expectations. Furthermore, on-farm hatching has the additional advantage of a stress-free start-up phase for the day-old chicks, resulting in more robust birds with a higher immunity and a better intestinal health. A lower incidence of footpad lesions and lower utilization of antibiotics are a clear advantage of on-farm hatching with NestBorn®.

NestBorn® offers benefits for the chick and the farmer.
Chicks are healthier and are less susceptible to diseases,
the chick is more robust.





- ✓ Quick placement (45.000 eggs/hour)
- ✓ Efficient process
- ✓ Easy implementation

Automated process **EASY IMPLEMENTATION**

NestBorn® is widely applicable without need for specific installations or investments in the pre-heated broiler house. A simple litter bed prepares the house for the egg placement. Pre-incubated eggs are smartly and gently placed in the natural litter bed by the hatchery using a specially designed and developed machine.

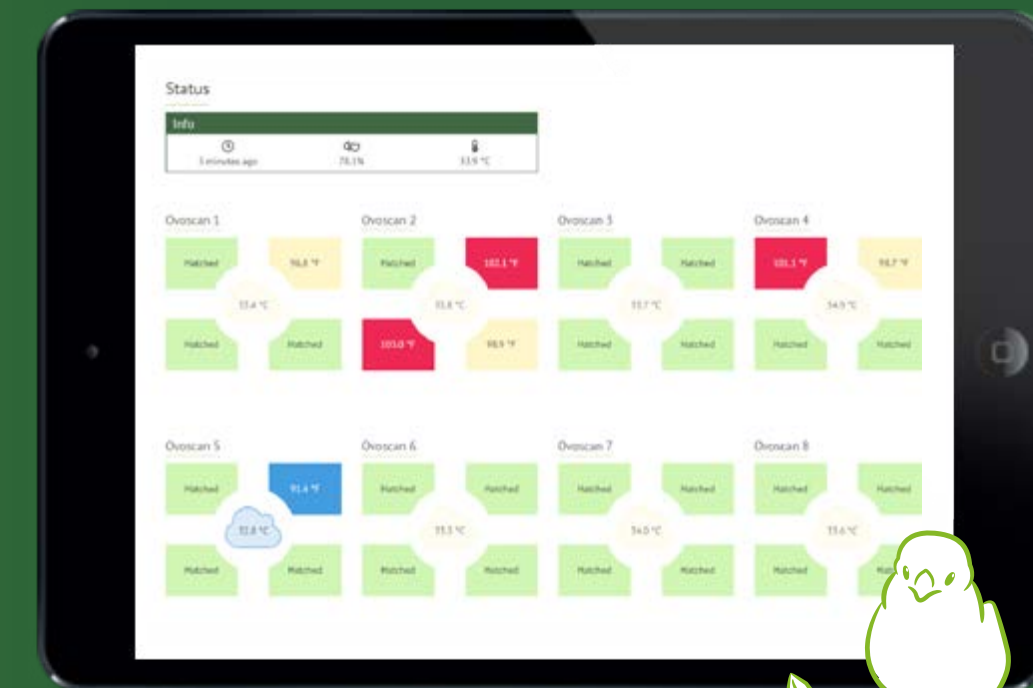
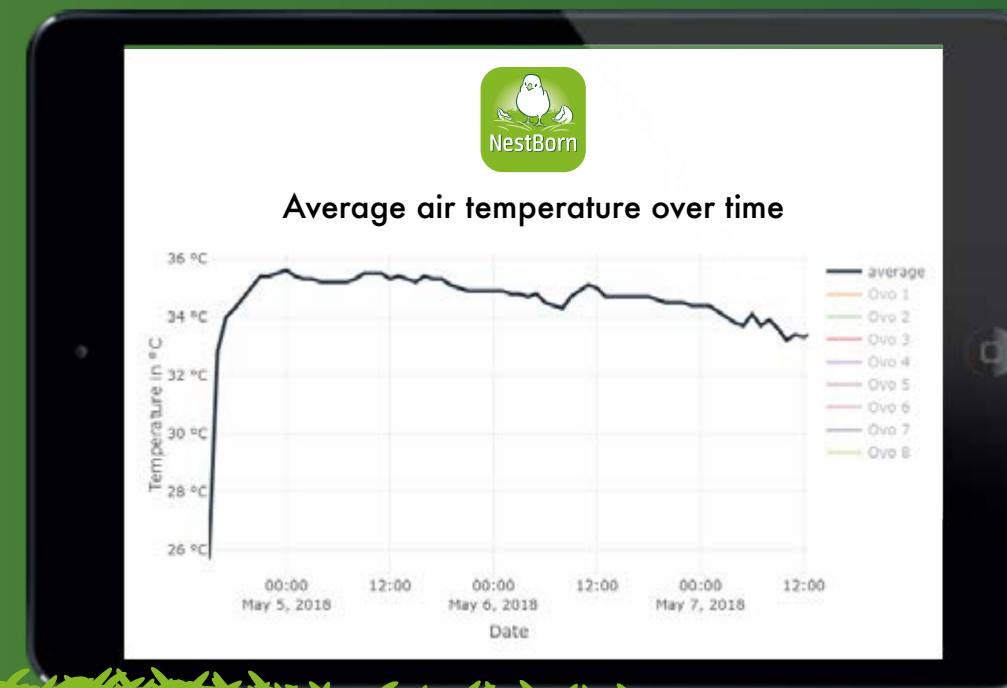


MyNestBorn

Full CONTROL

NestBorn® is the first concept in 'on-farm hatching' that can assure the hatchery as well as the farmers of real-time monitoring of the hatching process.

A unique "real-time" monitoring platform (mynestborn.eu) of the egg shell temperature in the broiler house allows that farmer and hatchery can team up in order to create optimal broiler house conditions and optimal performance of the hatching process. The small proportion of non-hatched eggs are removed from the broiler house and solutions are available to process them accordingly to applicable legislation.





Added **VALUE**

The combination of the animal friendly hatching process and start-up of the day-old chicks and the monitoring of the hatching process offers opportunities for creating added value. NestBorn flocks get a certificate when the chicks are born in an animal friendly and stress-free environment. The NestBorn team discusses the opportunities of the NestBorn concept with retail, restaurant chains and meat processors. Our aim is that the farmers who use NestBorn are rewarded for the fact that they produce meat in an animal friendly & sustainable way.





GREAT START

- ✓ Smooth feed & water access
- ✓ No stress from chick handling
or transport
- ✓ Day-old chicks on every day
of the week
- ✓ Excellent results

ANIMAL WELFARE

- ✓ Natural hatching process
- ✓ Stress-free conditions
- ✓ Early feeding & drinking
- ✓ Access to space and light
- ✓ Less footpad lesions

ANIMAL HEALTH

- ✓ Enhanced immunological development
- ✓ Reduced disease pressure
- ✓ Better intestinal health and dry litter
- ✓ Less use of antibiotics

“Look deep into nature, and then you will understand everything better.”

– Albert Einstein



NestBorn

HFHC nv

Industriepark 6

3300 Tienen

Belgium

info@nestborn.eu

www.nestborn.eu

NestBorn is a registered trade mark.

The NestBorn method and installation has been patented and the use of it is allowed only under a license agreement with HFHC nv.

©HFHC nv 2018.